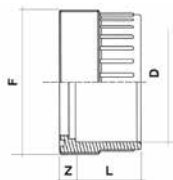


Tuleja z gwintem

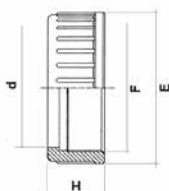
BFD | KW



D	SYMBOL	L	Z	F
20	1110091	16	10	1"
25	1110092	19	10	1 ¼"
32	1110843	22	10	1 ½"
40	1110844	26	12	2"
50	1110845	31	14	2 ¼"
63	1110846	38	18	2 ¾"
75	1110847	44	18	3 ½"
90	1110848	51	18	4"
110	1110849	61	18	5"

Nakrętka do dwuzłaczy BOD, BOE, BOG

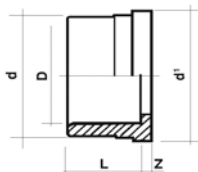
BGD



D	SYMBOL	H	F	E
20	1110094	23	1"	42
25	1110095	25	1 ¼"	52
32	1110096	27	1 ½"	59
40	1110097	30	2"	72
50	1110098	34	2 ¼"	79
63	1110099	38	2 ¾"	96
75	1110100	45	3 ½"	119
90	1110101	52	4"	134
110	1110102	60	5"	163

Tuleja do dwuzłaczy BOD, BOG

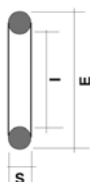
BLD | KW



D	SYMBOL	L	Z	d	d1
20	1110104	16	3	27.5	30.1
25	1110105	19	3	36.0	38.8
32	1110106	22	3	41.5	44.7
40	1110107	26	3	53.0	56.5
50	1110108	31	3	59.0	62.6
63	1110109	38	3	74.0	78.4
75	1110850	44	3	92.5	97.2
90	1110851	51	5	105.0	110.0
110	1110110	61	5	135.4	135.4

Uszczelka O-ring do dwuzłaczy BOE, BOD, BOG

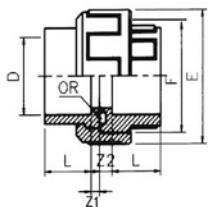
GBO



WYMIAR	SYMBOL	I	E	S
16	1110697	15.5	20.80	2.6
20	1110698	20.2	27.30	3.5
25	1110699	28.2	35.20	3.5
32	1110700	32.9	40.00	3.5
40	1110701	40.6	51.30	5.3
50	1110702	47.0	57.70	5.3
63	1110703	59.7	70.40	5.3
75	1110704	78.7	89.40	5.3
90	1110705	91.4	102.10	5.3
110	1110706	113.67	124.35	5.3

Dwuzłaczka z uszczelką O-ring

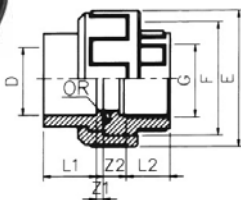
BOD | KW x KW



D	SYMBOL	L	Z1	Z2	F	E	PN
16	1110111	14	3	10	3/4"	34	16
20	1110112	16	3	10	1"	42	16
25	1110113	19	3	10	1 1/4"	52	16
32	1110114	22	3	10	1 1/2"	59	16
40	1110115	26	3	12	2"	72	16
50	1110116	31	3	14	2 1/4"	79	16
63	1110117	38	3	18	2 3/4"	96	16
75	1110118	44	3	18	3 1/2"	119	10
90	1110119	51	5	18	4"	134	10
110	1110120	61	5	18	5"	163	10

Dwuzłaczka

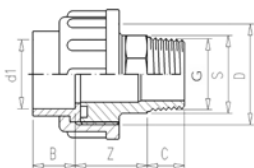
BOG | KW x GW



D x G	SYMBOL	L1	L2	Z1	Z2	F	E	PN
16 x 3/8"	1110687	14	11	3	14	3/4"	34	10
20 x 1/2"	1110688	16	15	3	11	1"	42	10
25 x 3/4"	1110689	19	16	3	13	1 1/4"	52	10
32 x 1"	1110690	22	19	3	13	1 1/2"	59	10
40 x 1 1/4"	1110691	26	21	3	17	2"	72	10
50 x 1 1/2"	1110692	31	21	3	24	2 1/4"	79	10
63 x 2"	1110693	38	26	3	30	2 3/4"	96	10
75 x 2 1/2"	1110694	44	30	3	32	3 1/2"	119	10
90 x 3"	1110695	51	33	5	36	4"	134	10
110 x 4"	1110696	61	39	5	40	5"	163	10

Dwuzłaczka

BMG | KW x GZ



D1 x G	SYMBOL	Z	B	C	d	PN
10 x 1/4"	1120746	27	12	12	5/8"	16
12 x 1/4"	1120747	27	12	12	5/8"	16
16 x 3/8"	1120748	31	14	12	3/4"	16
20 x 1/2"	1120749	32	16	17	1"	16
25 x 3/4"	1120560	26	19	17	1 1/4"	16
32 x 1"	1120561	35	22	22	1 1/2"	16
40 x 1 1/4"	1120562	38	26	24	2"	16
50 x 1 1/2"	1110676	41	31	24	2 1/4"	16
50 x 2"	1110677	-	-	-	-	16
63 x 2"	1110678	44	38	28	2 3/4"	16
75 x 2 1/2"	1120563	56	44	34	-	10
90 x 3"	1120564	68	51	37	-	10
110 x 4"	1120750	77	60	43	-	10

Dwuzłaczka

BMO | KW x GZ



D x G	SYMBOL	A	B	E	PN
50 x 1 1/2"	1110066	99	99	20	16

Dwuzłaczka

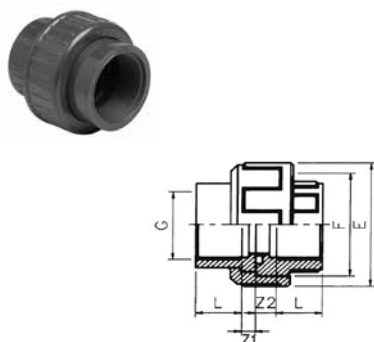
BMV | KW x GZ



D1 x G	SYMBOL	Z	B	C	d	S	PN
16 x 3/8"	1120273	36.5	14	10	3/4"	25	10
20 x 1/2"	1120274	40	16	10	1"	28	10
25 x 3/4"	1120275	42	19	12	1 1/4"	32	10
32 x 1"	1120276	43	22	15	1 1/2"	38	10
40 x 1 1/4"	1120277	48	26	15	2"	46	10
50 x 1 1/2"	1120278	53.5	31	18	2 1/4"	55	10
50 x 2"	1120279	53.5	31	23.5	2 1/4"	55	10
63 x 2"	1120280	54.5	39	23.5	2 1/2"	65	10

Dwuzłaczka

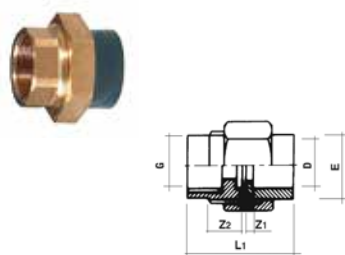
BOE | GW x GW



G	SYMBOL	F	E	L	Z1	Z2	PN
3/8"	1110446	3/4"	34	11	6	14	16
1/2"	1110447	1"	42	15	4	11	16
3/4"	1110448	1 1/4"	52	16	6	13	16
1"	1110449	1 1/2"	59	19	6	13	16
1 1/4"	1110450	2"	72	21	8	17	16
1 1/2"	1110451	2 1/4"	79	21	13	24	16
2"	1110452	2 3/4"	96	26	15	30	16
2 1/2"	1110453	3 1/2"	119	30	17	32	16
3"	1110454	4"	134	33	23	36	16
4"	1110455	5"	163	39	27	40	16

Śrubunek mosiądz

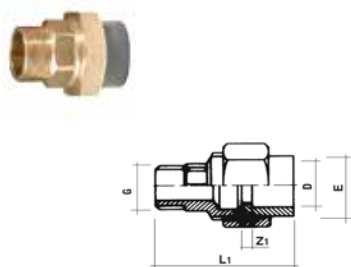
BBG | KW x GW



D x G	SYMBOL	E	L1	Z1	Z2	PN
20 x 1/2"	1110668	27.5	44.5	3	8	16
25 x 3/4"	1110669	36.0	49.0	3	8	16
32 x 1"	1110670	41.5	52.0	3	8	16
40 x 1 1/4"	1110671	53.0	60.0	3	8	16
50 x 1 1/2"	1110672	59.0	68.0	3	9	16
63 x 2"	1110673	74.0	81.0	3	10	16
75 x 2 1/2"	1110674	92.5	94.0	3	16	16
90 x 3"	1110675	105.0	103.0	5	14	16

Śrubunek mosiądz

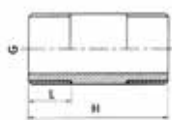
BNG | KW x GZ



D x G	SYMBOL	E	L1	Z1	PN
20 x 1/2"	1110679	27.5	57.5	3	16
25 x 3/4"	1110680	36.0	68.5	3	16
32 x 1"	1110681	41.5	71.5	3	16
40 x 1 1/4"	1110682	53.0	85.5	3	16
50 x 1 1/2"	1110683	59.0	91.5	3	16
63 x 2"	1110684	74.0	109.0	3	16
75 x 2 1/2"	1110685	92.5	126.5	3	16
90 x 3"	1110686	105.0	138.5	5	16

Nypel długi

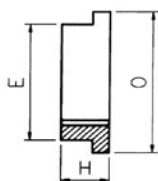
BNE | GZ x GZ



G	SYMBOL	L	H
1/2"	1110437	14	44
3/4"	1110438	16	50
1"	1110439	19	56
1 1/4"	1110440	21	62
1 1/2"	1110441	24	75
2"	1110442	32	87
2 1/2"	1110443	29	87
3"	1110444	30	105

Nakrętka

NUE | GW



WYMIAR	SYMBOL	E	H	O
1/2"	1110533	28	13	38
3/4"	1110534	33	14	43
1"	1110535	46	16	56
1 1/4"	1110536	50	18	65
1 1/2"	1110537	60	19	72
2"	1110538	80	21	94
2 1/4"	1120643	76	22	76
2 1/2"	1110539	95	23	105
3"	1110540	110	27	125
4"	1110541	140	31	154

Przyłącze zbiornika*

ASE | GZ x GZ

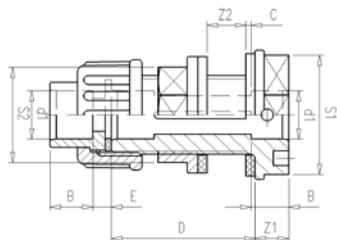


WYMIAR	SYMBOL
1/2"	1110418
3/4"	1110419
1"	1110420
1 1/4"	1110421
1 1/2"	1110422
2"	1110423
2 1/2"	1110424
3"	1110425
4"	1110426

* BNE + NUE (2 sztuki) + GQP (2 sztuki)

Śrubunek zbiornika ze złączką

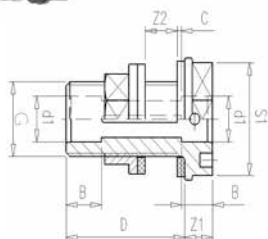
ASG | KW



D1 x G	SYMBOL	Z1	Z2	B	C	S2	S1	E
16 x 3/4"	1120607	11	0-19	14	5	47	40	6
20 x 1"	1120608	12	0-17	16	5	49	50	6
25 x 1 1/4"	1120609	13	0-18	19	5	52	50	6
32 x 1 1/2"	1120610	13	0-19	22	5	54	64	6
40 x 2"	1120611	13	0-16	26	6	59	78	6.5
50 x 2 1/4"	1120612	15	0-16	31	6	61	85	6.5
63 x 2 3/4"	1120613	15	0-19	38	6	69	100	6.5

Śrubunek zbiornika

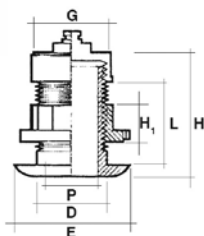
ASR | GZ x KW



D1 x G	SYMBOL	Z1	Z2	B	E	S1
16 x 3/4"	1120600	11	0-28	14	47	40
20 x 1"	1120601	12	0-28	16	49	50
25 x 1 1/4"	1120602	13	0-28	19	52	50
32 x 1 1/2"	1120603	13	0-28	22	54	64
40 x 2"	1120604	13	0-29	26	59	78
50 x 2 1/4"	1120605	15	0-30	31	61	85
63 x 2 3/4"	1120606	15	0-35	38	69	100

Korek zbiornika (PP)

ATE



G	SYMBOL	D	E	H	P	L	H1
1 1/2"	1110427	48	80	90	37	56	25

Powiązane produkty:

Nitka teflonowa



Str. 150

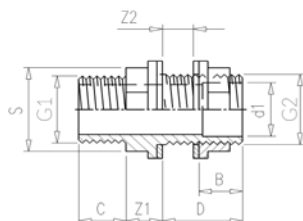
Taśma teflonowa



Str. 150

Śrubunek zbiornika

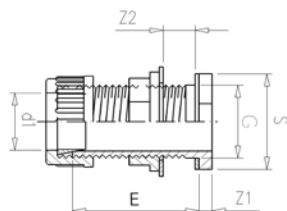
AST | KW x GZ x GZ



D1 x G1 x G2	SYMBOL	Z1	Z2	B	C	D	S
20 x 3/4" x 3/4"	1120579	13	0-23	16	17	42	32
25 x 1" x 1"	1120582	15	0-23	19	21	45	40
32 x 1 1/4" x 1 1/4"	1120586	17	0-26	22	23	49	50
40 x 1 1/2" x 1 3/4"	1120589	19	0-21	26	23	48	60
50 x 2" x 2"	1120591	21	0-21	31	27	52	69
50 x 2" x 2 1/4"	1120928	21	0-21	31	27	52	76
63 x 2 1/2" x 2 1/2"	1120929	23	0-23	38	31	53	85
75 x 3" x 3"	1120597	26	0-20	40	34	56	100
90 x 4" x M113	1120780	32	0-20	51	40	62	125

Śrubunek zbiornika z nakrętką zaciskową

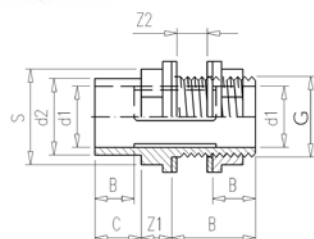
ASU | GZ



D1 x G	SYMBOL	Z1	Z2	E	S
20 x 3/4"	1120580	8	0-25	56	32
25 x 1"	1120583	10	0-25	60	40
32 x 1 1/4"	1120584	7	0-25	66	55
40 x 1 3/4"	1120587	7	0-25	78	74
50 x 2"	1120593	9	0-30	84	78
63 x 2 1/2"	1120594	9	0-30	90	100

Śrubunek zbiornika

ASZ | KW x KZ x GZ



D1 x D2 x G	SYMBOL	Z1	Z2	B	C	S
20 x 25 x 3/4"	1120578	13	0-23	16	19	32
25 x 32 x 1"	1120581	15	0-23	19	22	40
32 x 40 x 1 1/4"	1120585	17	0-26	22	26	50
40 x 50 x 1 3/4"	1120588	19	0-21	26	31	60
50 x 63 x 2"	1120590	21	0-21	31	38	69
50 x 63 x 2 1/4"	1120592	21	0-21	31	38	76
63 x 75 x 2 1/2"	1120595	23	0-23	38	44	85
75 x 90 x 3"	1120596	26	0-20	44	51	100
90 x 110 x M113	1120598	32	0-20	51	61	126
110 x 125 x M133	1120599	36	0-22	61	69	147